

USE, CARE AND INSTALLATION GUIDE

Read all instructions before installing and operating this appliance

EZ930.EZ936

IMPORTANT SAFETY NOTICE

WARNING

Installation

The installation instruction in this manual is intended for qualified installers, service technicians or persons with similar qualified background. **DO NOT** attempt to install this appliance yourself. Injury could result from installing the unit due to lack of appropriate electrical and technical background.

All electrical wiring should be properly installed, insulated, and grounded. Overly accumulated grease on old duct work should be cleaned out or duct work should be replaced if necessary to avoid the possibility of grease fire. Check all sections and joints on duct work to insure proper connection and all joints should be properly taped.

Operations

Read all instructions in this manual before operating the appliance. Save these instructions for future reference.

ALWAYS leave safety grills attached in place at all times. Operating blowers could catch on to hair, fingers, and loose clothing.

Keep unit and residue containers clean from grease accumulation from time to time. **NEVER** dispose foreign substances into the blowers. Do not dispose cigarette ashes or ignitable substances into the blowers.

Cleaning

Use with extreme caution while performing the Self Cleaning Function and safety grills are removed. Beware of fingers, hair, loose clothing from getting in the blowers and **NEVER** leave children unattended.

NEVER disassemble parts to clean without proper instructions. Disassembly are recommended to be performed by qualified personnel only. We are not responsible for injury due to negligence and the warranty of the unit automatically expires due to improper maintenance. Call our Service Center for removal instructions.

XP 02250(2)

1. WARNING-TO REDUCE THE RISK OF FIRE, ELECTRIC SHOCK, OR INJURY TO PERSONS, OBSERVE THE FOLLOWING:

- a. Use this unit only in the manner intended by the manufacturer ,If you have questions, contact the manufacturer.
- b. Before servicing or cleaning unit, switch power off at service panel and lock service panel to prevent power from being switched on accidentally. When the service disconnecting means cannot be locked, securely fasten a prominent warning device such as a tag. To the service panel.
- c. Installation work and electrical wiring must be done by qualified person(s) in accordance with all applicable codes and standards , Including Fire-Rated construction .
- d. Sufficient air needed proper combustion and exhausting of gases through the flue (chimney) of fuel burning equipment to prevent back drafting. Follow the heating equipment manufacturer' s guideline and safety standards such as those published by the national Fire Protection Association (NFPA), and the American Society for Heating Refrigeration and Air Conditioning Engineers (ASHRAE), and the local code authorities.
- e. When cutting or drilling into wall or ceiling , do not damage electrical wiring and other hidden utilities .
- f. Dusted fans must always be vented to the outdoors.
- g. If this unit is to be installed over a tub or a shower , it must be marked as appropriate for the application and be connected to a GFCL (Ground Fault Interrupter protected branch circuit).
- h. NEVER place a switch where it can be reached from a tub or shower.
- i. **WARNING-TO REDUCE THE RISK OF FIRE, USE ONLY METAL DUCT WORK.**
- j. Make sure the power is off before installing, wiring or maintenance.

2. "CAUTION"-For general ventilating use only. Do not use to exhaust hazardous or explosive materials and vapors.

3. WARNING-TO REDUCE THE RISK OF A RANGE TOP GREASE FIRE:

- a. Never leave surface units unattended at high settings. Boilovers cause smoking and greasy spillovers that may ignite. Heat oils slowly on low or medium settings.
- b. Always run hood on when cooking at high heat or when cooking flaming foods.
- c. Clean ventilating fans frequently. Grease should not be allowed to accumulate on fan or filter.
- d. Use proper pan size. Always use cookware appropriate for the size of the surface element.
- e. Keep fan, filters and grease laden surface clean.
- f. Use high hood setting on hood only when necessary.
- g. Don' t leave hood unattended when cooking.
- h. Always use cookware and utensils appropriate for the type and amount of food being prepared.

4. WARNING-TO REDUCE THE RISK OF INJURY TO PERSONS IN THE EVENT OF A RANGE TOP GREASE FIRE ,OBSERVE THE FOLLOWING^a:

- a. **SMOTHER FLAMES** with a close-fitting lid, cookie sheet, or metal tray, then turn off the burner, **BE CAREFUL TO PREVENT BURNS**. If the flames do not go out immediately, **EVACUATE AND CALL THE FIRE DEPARTMENT**.
- b. **NEVER PICK UP A FLAMING PAN**-You may be burned.
- c. **DO NOT USE WATER**, including wet dishcloths or towels a violent steam explosion will result.
- d. Use an extinguisher only if:
 - 1. You know you have a class ABC extinguisher, and you already know how to operate it.
 - 2. The fire is small and contained in the area where it started.
 - 3. The fire department is being called.
 - 4. You can fight the fire with your back to an exit.
- e. **"WARNING-ReducedThe Risk Of Fire Or Electric Shock, Do Not Use This Fan With Any Solid-State Speed Control Device"**.

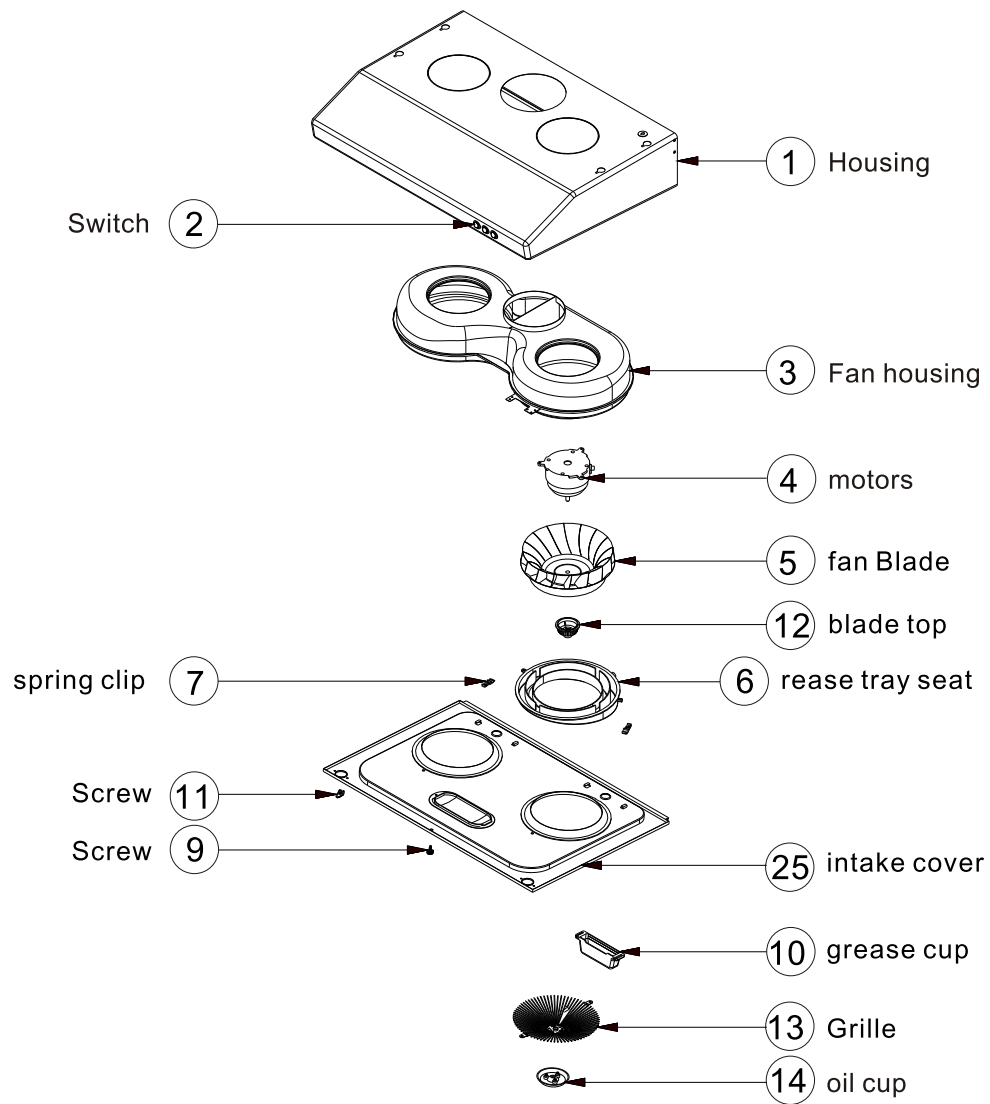
^aBased on "Kitchen Fire Safety Tips" published by NFPA.

⚠Do not use this fan with any solid-state speed control device!



1

Maintenance



Detached:

The first step: To remove the safety screw (No:9)

Then to detach the grease cup (No:10), oil cup (No:14) and Grille (No:13)

The second step: Anti-clockwise to detach screw button (No:10) and reload the intake cover(No:25)
Then Clockwise the spring clip(No:7) and reload the grease tray seat (No:6)

The final step: Clockwise the blade top(No:12) and reload the blade top and fan Blade(No:5)

Reinstall:

The first step: Reinstall the fan blade (No:5) and anti-clockwise the blade top(No:12)

The second step: To reinstall the grease tray seat (No:6), and reinstall the spring clip(No:7)

The third step: Install the the intake cover(No:25) and clockwise the screw button (No:10). Then reinstall the grease cup (No:10), oil cup (No:14) and Grille (No:13)

The final step: Reinstall the safety screw (No:9)

3

INSTALLATION

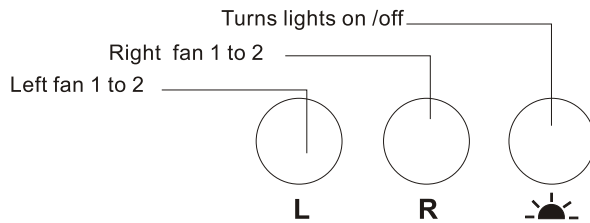
WARNING

Installation of this product is intended for qualified installers, service technicians, or persons with similar qualified background. DO NOT attempt to install this appliance yourself. Injury could result from installing the unit due to lack of appropriate electrical knowledge and technical background. Improper installation, adjustment, alteration, service or maintenance can cause injury or property damage and the warranty on the product automatically becomes void.

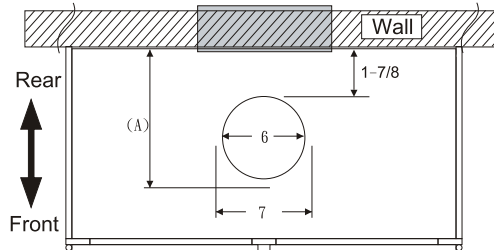
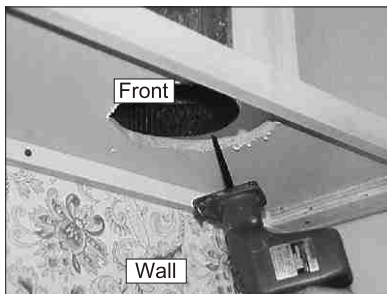
Installation of this product must conform with all local codes. All connections must be electrically grounded and ducting must be properly vented outside in accordance to codes. Never duct exhaust into attics, within walls, crawlspaces, garages, or anywhere inside the house which might cause grease fire. All duct joints must be properly inspected, taped and sealed.

Edges are exposed around the duct opening and once the bottom grease shield is removed. Be careful when handling the sharp edges. Wearing protective gloves and appropriate work clothing is recommended.

CONTROLS



DUCT OPENING

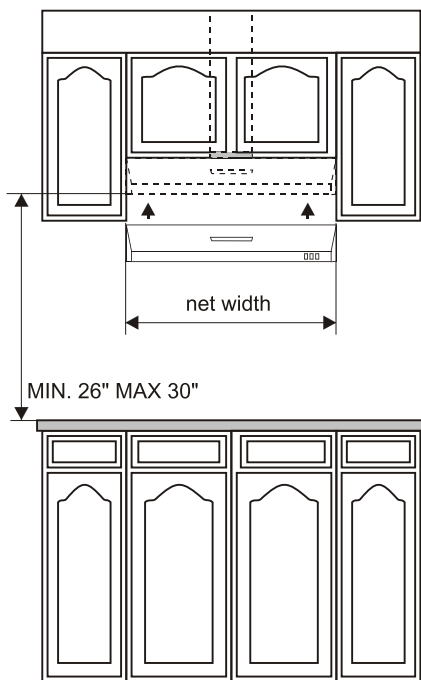


Cut Out Size (A): _____

INSTALLATION

4

CLEARANCES



Minimum clearance above range should be no less than 26" from the range surface to the range hood's base. Maximum height are recommended not to exceed 30" for maximum efficiency.

Net width on all models are call out width less 1/4"

Call Out Size	Net Width
30	29-3/4
36	35-3/4

Note: Refer Manufacturers' height clearance requirements on all high btu and professional ranges.

DUCT REQUIREMENT

6" Vertical Discharge

Minimum duct size should be no less than 6" Smaller duct size, long duct run and turns will reduce hood performance and efficiency.

Use single wall right type galvanized pipes only, do not use flexible type ducts.

Generally, use minimum duct size recommended (6"). Reduce the number of turns and bends. If long duct run (beyond 20' vertical and 35' horizontal) is required.

If a reducer is required, use a long reducer instead of a short pancake reducer. Install reducers as far away from duct opening as possible.

If turns are required:
Install first elbow as far away from opening as possible.
Between elbows, install as far as possible.
Use two 45 elbow (installed as far apart as possible), instead of one 90 elbow.
Increase duct size.)

5

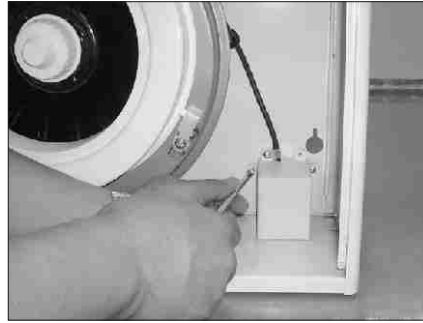
INSTALLATION

STEP 1



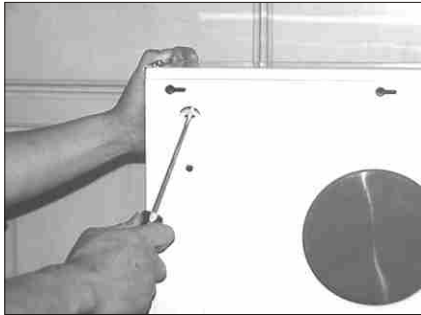
1. Remove all contents from box
2. Unscrew and remove bottom grease splash shield

STEP 2



1. Locate electrical connection box inside
2. Unscrew cover to reveal wiring

STEP 3



1. Locate electrical connection box knock out from left rear of hood and pry open with screwdriver

STEP 4



1. Cut out cabinet base opening if necessary. Refer cut out dimensions previous page.

STEP 5



1. Reinforce cabinet base with 1x2 wood strips if additional strengthening is required.

STEP 6 (also refer notes on pg. 16)

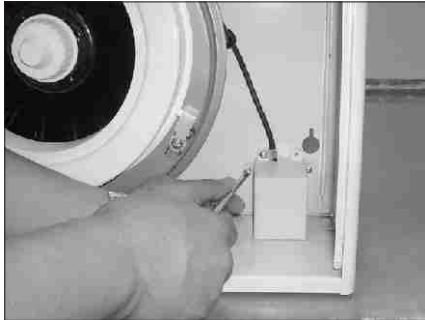


1. Install damper if required by local codes (not provided), or install 6" starting collar (green)**

INSTALLATION

6

STEP 13



1. Reinstall electrical box cover.

STEP 14



1. Reinstall bottom splash shield by first fastening 3 rear screws, (do not tighten all the way).

STEP 15



1. Next, fasten the 3 front screws and begin tightening all screws from rear to front.

STEP 16



1. Connect duct to opening, inspect and tape all joints with approved aluminum or duct tape.

STEP 17



1. Turn on electrical supply or plug into receptacles.

STEP 18



1. On Cyclone & Whirlwind models, be sure to pull both grease tubes over its opening.

7

INSTALLATION

STEP 7



1. Lift hood to bottom of cabinet

STEP 8



1. Support hood to place, fasten both rear with screws and washers provided.

STEP 9 (also refer notes on pg. 16)



1. Fasten front of hood. Level all sides and adjust accordingly.**

STEP 10



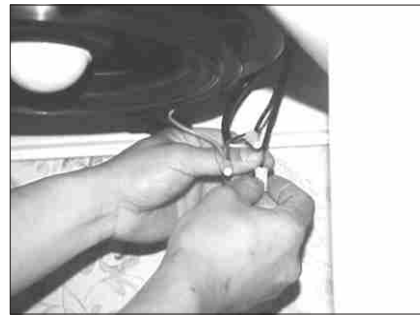
1. Drill out cabinet base through electrical box with 3/4" boring bit.

STEP 11



1. Pull electrical supply wire through drill out or use #14 grounded wire for receptacles (not supplied)

STEP 12 (also refer notes pg. 16)



1. Connect both wires (blk) on hood to either power Supply (blk or wht). Ground green wire.**